

Oneonta South Area Improvements Project Phase 2: 115kV Transmission Line Reroutes

Project Overview

As part of our commitment to provide safe, reliable service to all our customers, New York State Electric and Gas (NYSEG), in conjunction with our parent company, AVANGRID, is updating the electric transmission system in our service areas. These upgrades comply with new federal electric transmission reliability requirements. While making investments to meet the community's growing energy demands, we are working closely with our neighbors to ensure that all improvements are performed with minimal disruption to the environment and the communities we serve.

Project Information Line: 833.551.4300

Refer to: 115kV Line Reroutes

Email: outreach@rge.com

Website: OneontaSouthNYSEG.com

Project Purpose and Need

In 2010 the Federal Energy Regulatory Commission (FERC) established a "Brightline" threshold that redefined Bulk Electric System (BES) transmission elements as those operating at 100 kilovolt (kV) and above. In response, the North American Electric Reliability Corporation (NERC) updated its reliability standards and issued a "Brightline Order".

To comply with more stringent reliability standards issued at the federal level, NYSEG is planning an expansion of the existing Fraser Substation; changes at the existing Delhi Substation; and reconfiguring, establishment and/or rebuild of supporting transmission lines. This upgrade will enhance the integrity of the entire transmission system in your local area.

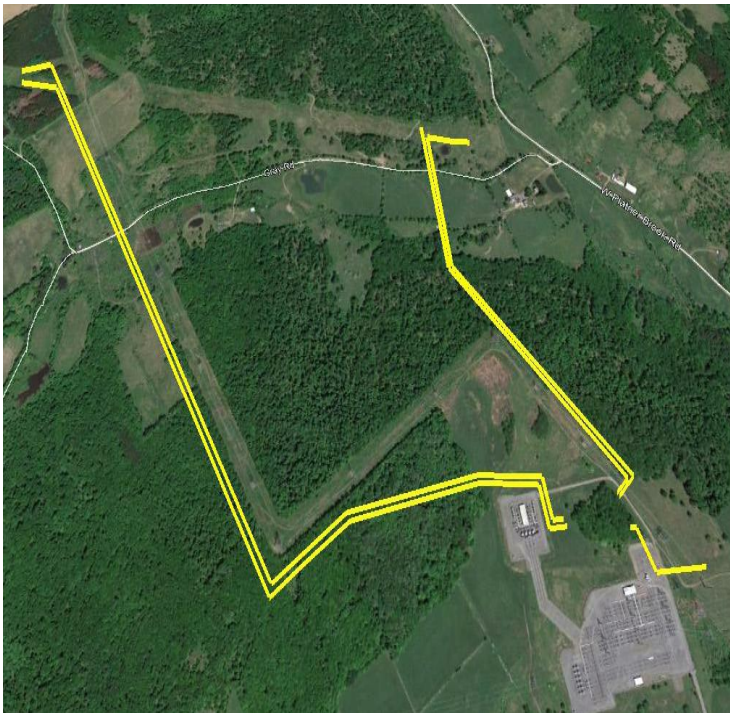


Figure 1: 115kV Transmission Line Reroutes (Yellow).

Oneonta South Solution

- **Phase 1:** Fraser Substation Improvements
- **Phase 2:** 115kV Transmission Line Reroutes
- **Phase 3:** New 46kV Transmission Line 824 Segment
- **Phase 4:** Delhi Substation Improvements
- **Phase 5:** New 46kV Transmission Line 841
- **Phase 6:** 115kV Transmission Line Segment 916 Rebuild

Phase 2: 115kV Transmission Line Reroutes Project Scope

- The rerouting of five 115kV transmission lines totaling ~4.5 miles in length is necessary to provide connection with the proposed Fraser 115kV Substation.
- The line reroutes include: Line 916: 0.67 miles; Line 917: 0.79 miles; Line 919: 1.42 miles; Line 949: 1.49 miles; and Line 951: 0.15 miles..
- The lines will parallel an existing right-of-way (ROW) corridor containing existing New York Power Authority (NYPA) overhead transmission lines for portions of their proposed alignments and will cross Gray Road.

Project Location

Municipalities: Towns of Delhi and Hamden

County: Delaware

Permitting required: Federal, State and Municipal

Estimated Timetable *(subject to change)*

Construction Start: Q1 2025

In Service Date: Q3 2026

Anticipated Regulatory Permits and Resource Reviews

- **Federal:**
 - Federal Aviation Administration (FAA): Aviation Hazard Review
 - U.S. Army Corps of Engineers (USACOE): Clean Water Act (CWA) Section 404 Permit
 - U.S. Fish and Wildlife Service (USFWS): Endangered Species Impact Review

- **New York State:**
 - New York State Environmental Quality Review Act (SEQR): Coordinated Review; Lead Agency Town of Delhi
 - New York State Public Service Commission (NYSPSC): Part 102 Reports
 - New York State Department of Environmental Conservation (NYSDEC): Stormwater Pollution Prevention Plan Approval
 - New York State Department of Environmental Conservation (NYSDEC): Individual State Pollutant Discharge Elimination System (SPDES) Permit for Stormwater Discharges from Construction Activities
 - New York State Department of Environmental Conservation (NYSDEC): 5 Acre Waiver
 - New York State Public Service Commission (NYSPSC): Article VII Certification Amendment

- **Local and Regional:**
 - Town of Delhi Construction Entrance Permit
 - Town of Delhi Overhead Line Crossing Notice

Regional Benefits

- The project contributions will improve the reliability and resiliency of the transmission system in the Fraser/Delhi Region, ensuring that safe and reliable distribution of power is maintained.
- The energy reliability improvements generated by the project can support expanded economic development.